

CLEAN GREEN ENERGY
**SAVES THE EARTH &
YOUR WALLETS**



SOLAR ON GRID ROOF TOP SOLUTIONS

www.venushomeappliances.com



About On-Grid solar:

On-grid solar power plant system comes without batteries, the solar panels generates DC and an inverter converts that into usable AC form, and this output is fed directly into the EB lines.

On-grid solar power plant system are solar systems that are connected to the building mains directly. These systems give priority to the solar power generated and only if the generated power is less than that required, the grid power will be used.

BENEFITS OF SOLAR



PAY ZERO FOR YOUR ELECTRICITY BILL

Install a system with recommended specifications to eliminate conventional power use



GET PROTECTED AGAINST TARIFF HIKES

Ensure that rising electricity tariff hikes have practically zero impact on your budget



EARN FROM YOUR IDLE ROOFTOP SPACES

Excess power is exported back to the grid and compensated by Electricity Board



REAP ACCELERATED DEPRECIATION BENEFIT

Eligible for accelerated depreciation from first year

WHY VENUS SOLAR ?



END TO END SOLUTIONS FOR COMPLETE SYSTEM

Our package includes mounting structures and electrical wirings



EFFICIENT AND EFFECTIVE CUSTOMER SUPPORT

We ensure best customer support post installation providing you complete peace of mind



QUICK AND QUALITY INSTALLATION

We have qualified solar engineers, architects and structural engineers to design the best system customized for your needs



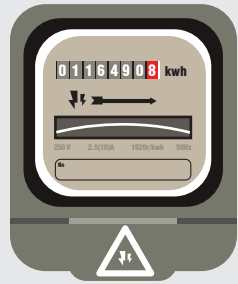
RELIABLE LONG-LASTING SYSTEM

Solar Panel - performance guarantee of 25 years; Inverter - 5 years guarantee; Other parts - 1 year guarantee

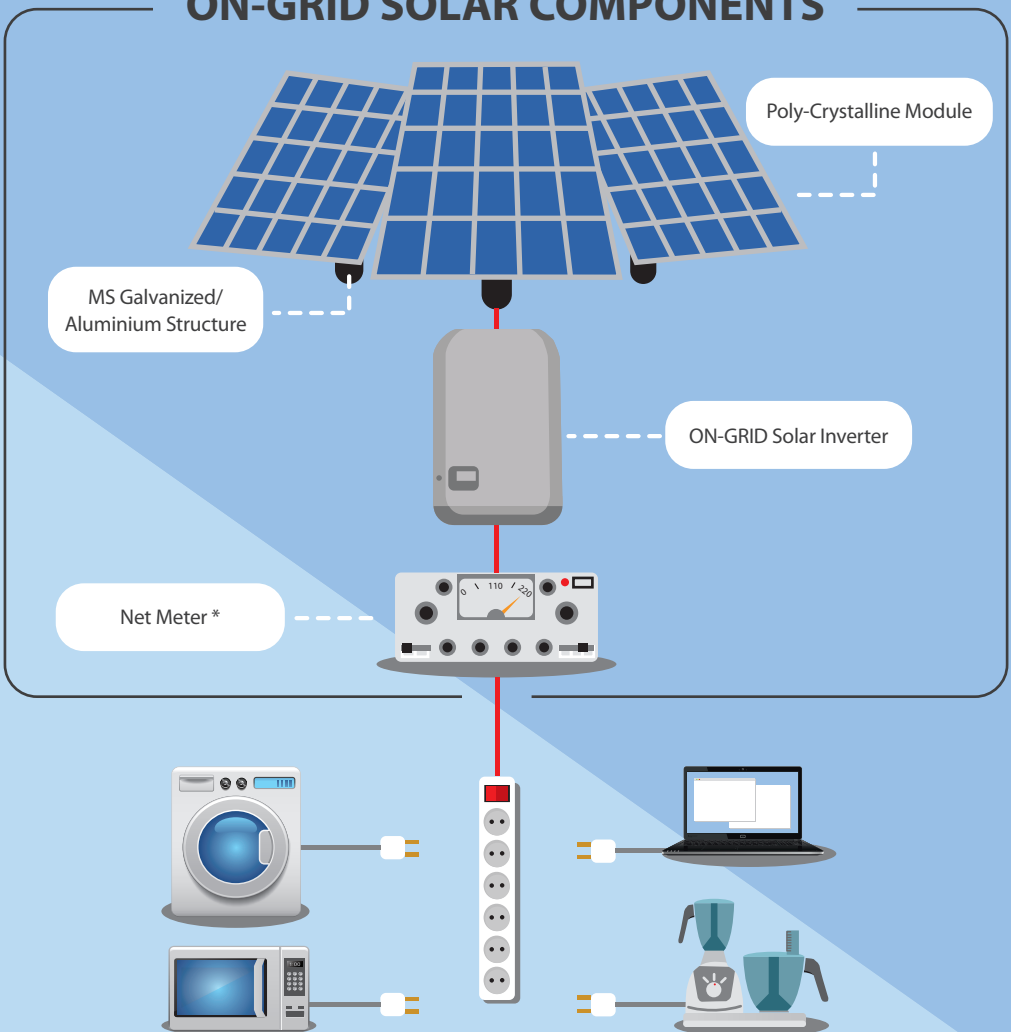
UNDERSTANDING NET METERING

The regular energy meter in our homes work in one direction only. This meter records the amount of electricity drawn from the EB lines and is used at home.

A Net-Meter is a bi-directional meter. It works in two directions as it records the amount of power drawn from the EB lines (import) and the excess power sent to the EB lines (export). So we get charged only for the difference.



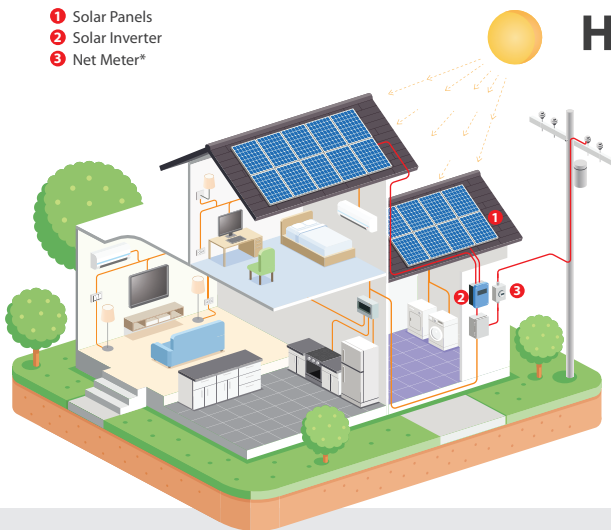
ON-GRID SOLAR COMPONENTS



*Net Meter in the scope of customer

- 1 Solar Panels
- 2 Solar Inverter
- 3 Net Meter*

HOW SOLAR WORKS



- The Sun produces photons
- Panels convert it to DC current
- Inverter Converts DC to AC current
- AC current powers the home appliances

PRODUCT SPECIFICATIONS

Details	1kWp	2kWp	3kWp	5kWp	10kWp
Solar PV Polycrystalline Panels(250Wp to 335Wp)	1000Wp	2000Wp	3000Wp	5000Wp	10000Wp
Grid Tie String Capacity	1kW	2kW	3kW	5kW	10kW
Annual Generation of Power plant in kWhr Units	1500 Units	3000 Units	4500 Units	7500 Units	15000 Units
Annual Savings in Rupees	Rs.12,000	Rs.24,000	Rs.36,000	Rs.60,000	Rs. 1,20,000
Module Mounting Structures	MS Galvanized / Aluminum				
Array Junction Box	IP 65 (Out Door) / IP 21 (In Door)				
DC Cables with UV Protection	1000V DC, of Appropriate Size Meeting IS 694 / 1554 Standards / Relevant IEC Standards				
AC Cables	1000V AC, of Appropriate Size Meeting IS 694 / 1554 Standards / Relevant IEC Standards				
DCDB/ACDB Protections	Circuit Breakers, Fuses, Surge Protection Device, Lighting Arrestor and Earthing				

*Net Meter in the scope of customer



For more Information:

Customer care: 08144666999

customer@venushomeappliances.com

www.venushomeappliances.com

For Installation of Solar Panels Call: